

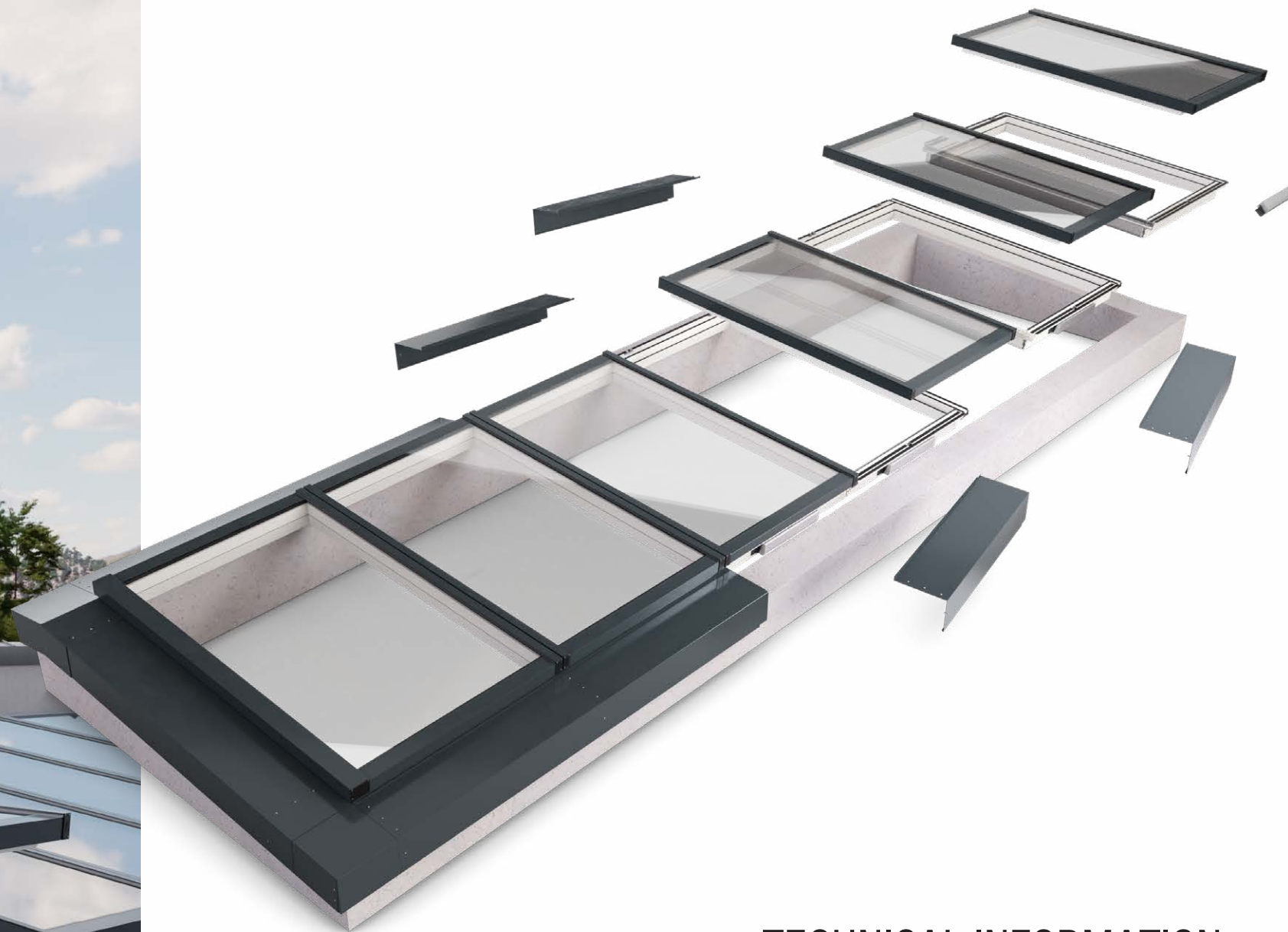


THE BEST OF TWO WORLDS

LAMILUX MODULAR GLASS SKYLIGHT MS78

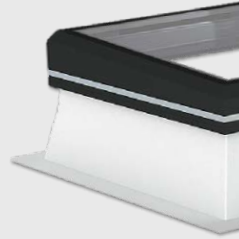


# LAMILUX MODULAR GLASS SKYLIGHT MS78 – THE BEST OF TWO WORLDS



# COMBINES THE ADVANTAGES OF TWO PROVEN SYSTEMS WITH NEW GLASS ROOF INNOVATIONS

## LAMILUX Glass Skylight FE



**Short delivery time**  
through lean and automated processes

**Best quality standards**  
due to high degree of prefabrication

**Simple and safe roof integration**  
through system-specific connection technology

## LAMILUX Glass Roof PR60



**Large areas of light**  
due to multi-pane glazing

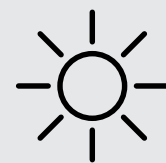
**Proven glass roof drainage**  
with two drainage levels

**High ventilation comfort**  
through variable opening vent integration



## LAMILUX Modular Glass Skylight MS78

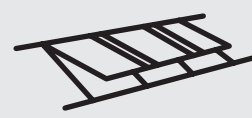
## TECHNICAL INFORMATION



**More light** – high proportion of glass due to module sizes up to 1.30 m x 3.00 m



**Even more light** – full light surface due to sash without clamping frame



**More air** – maximum ventilation area due to unrestricted sash arrangement



**Sustainable product** material cycle through single-origin recycling

### Dimensions

Module width (in m)  
0,675 0,75 0,80 0,90 1,00  
1,10 1,20 1,30

Module height (in m)  
0,70 0,90 1,10 1,30 1,50  
1,70 1,90 2,00 2,10 2,30  
2,50 2,70 3,00

All lengths and widths can be combined



Module width

Module height



### Glazing

Double or triple pane thermal, solar control or sound insulated glazing in clear or matt finish,  $U_g = 0.6 - 1.1 \text{ W/m}^2\text{K}$

### Energy saving

The overall system offers thermal insulation values significantly above the legal requirements, for lower costs and active energy savings

### Opening vents

Opening vents with concealed integrated drives, lifting height 300mm or 500mm



### Shading

Optional interior roller blind

White Light Grey Slate Grey

### Direct mounting

without additional profiles on load-bearing surfaces (concrete, wood, steel)

### Field of application

Monopitch roof up to 3.00 m wide in variable length, inclination of glazing from 5° - 30°

### SEP



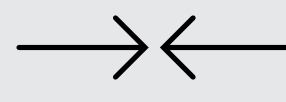
**Seamless Drainage profile**  
Maximum safety from the first sealing level onwards

### NFI



**Native Flap Integration**  
Uniform appearance of opening vents and fixed elements

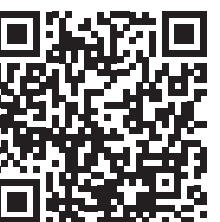
### SAM



**Self-aligning module connection**  
V-groove simplifies precise installation



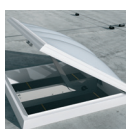
**Optimised construction process**  
Complete installation from the roof side in one stage



Learn more at  
[www.lamilux.com/modular-glass-skylight](http://www.lamilux.com/modular-glass-skylight)



Scan this to learn more about  
LAMILUX skylights!



ROOFLIGHT F100 W



GLASS SKYLIGHT F100



GLASS SKYLIGHT FE



GLASS ARCHITECTURE



RENOVATION



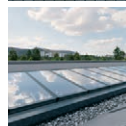
MIROTEC STEEL CONSTRUCTIONS



CONTINUOUS ROOFLIGHT B/S



FLAT ROOF HATCHES



MODULAR GLASS SKYLIGHT MS 78



SMOKE AND HEAT EXHAUST  
VENTILATION SYSTEMS



RODA LIGHT AND AIR TECHNOLOGY



MODULAR GLASS SKYLIGHT MS78

The technical data listed in this brochure correspond to the current status at the time of printing and are subject to change. Our technical specifications are based on calculations and supplier specifications, or have been determined by independent testing authorities within the scope of applicable standards.

Thermal transmission coefficients for our plastic glazing were calculated using the finite element method with reference values in accordance with DIN EN 673 for insulated glass. Taking into account practical experience and the specific characteristics of plastic, the temperature difference between the outer surfaces of the material was defined as 15 K. Functional values refer to test specimens and the dimensions used in testing only. We cannot provide any further guarantees of technical values. This particularly applies to changed installation conditions or if dimensions are re-measured on site.



**LAMILUX Heinrich Strunz GmbH**

Zehstraße 2 . PO Box 1540 . 95111 Rehau . Tel.: +49 (0) 92 83 / 5 95-0 . Fax +49 (0) 92 83 / 5 95-29 0

E-Mail: [information@lamilux.de](mailto:information@lamilux.de) . [www.lamilux.com](http://www.lamilux.com)

